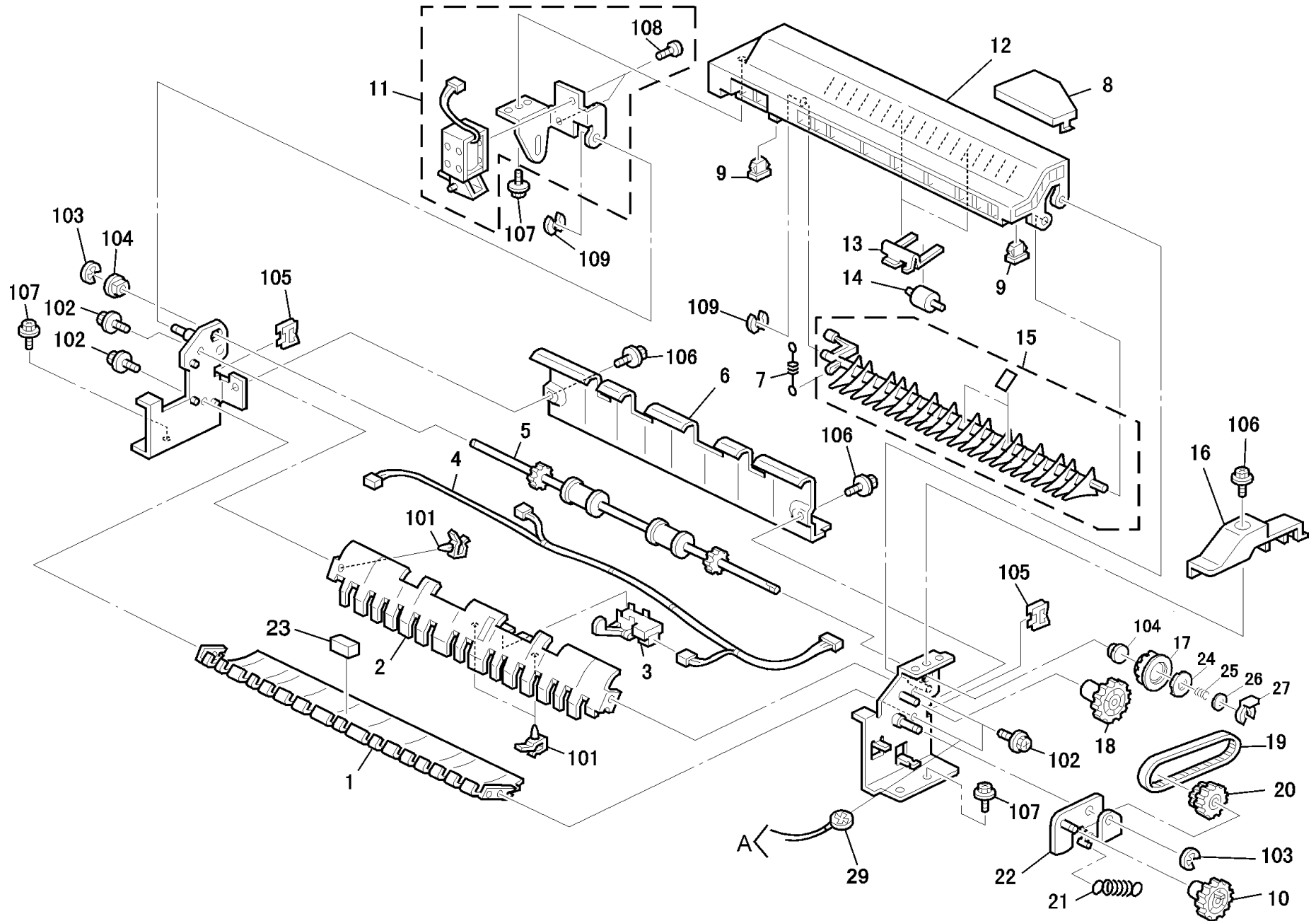


**BRIDGE UNIT TYPE 450 A688
PARTS LOCATION AND LIST**

This chapter instructs you as to the numbers and names of parts on this machine.

1.BRIDGE UNIT 1 (A688)

Rev. 10/02/2001



1.BRIDGE UNIT 1 (A688)

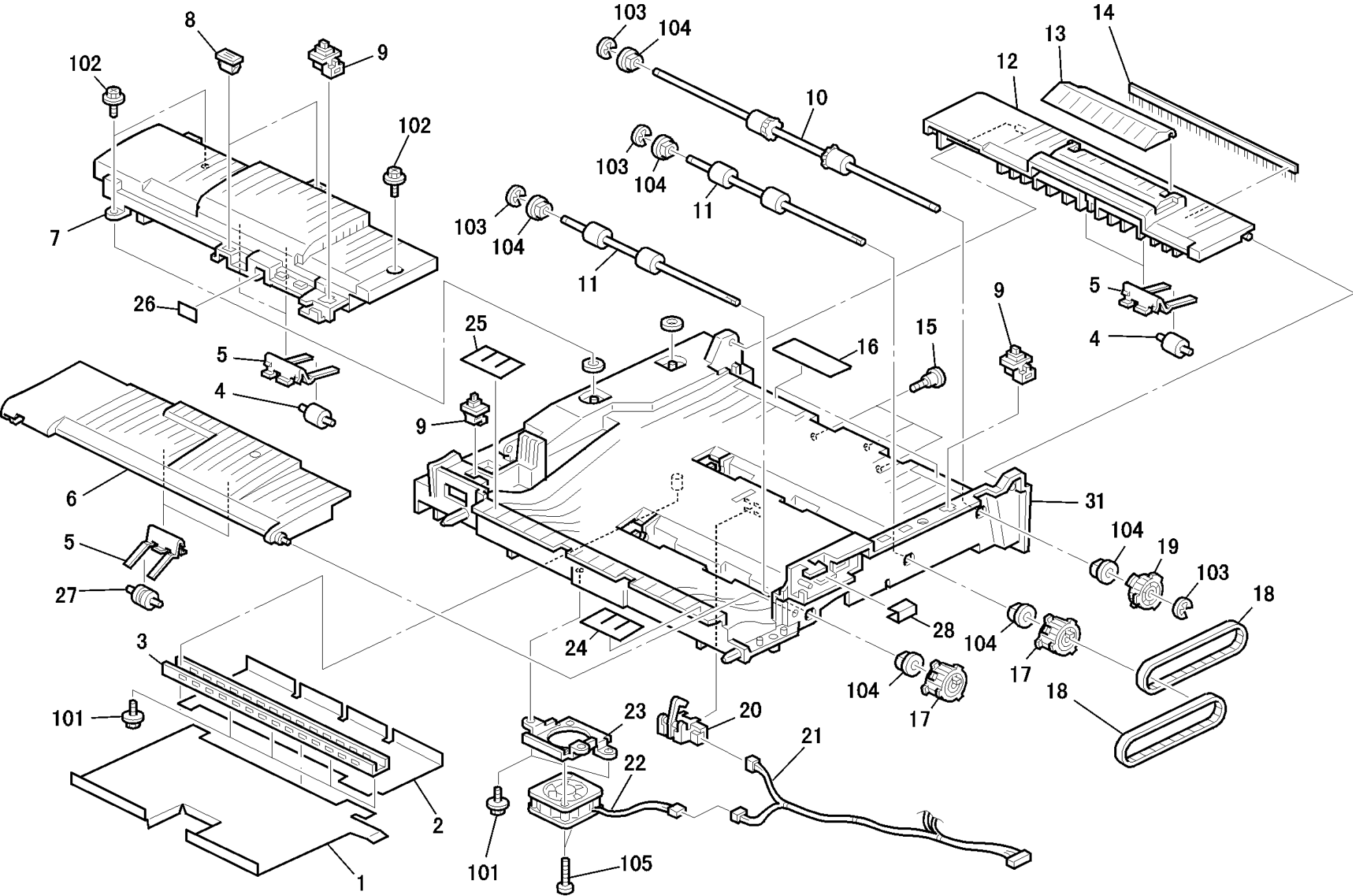
Rev. 10/03/2001

Index No.	Part No.	Description	Q'ty Per Assembly
1	A688 4478	Lower Guide Plate	1
2	A688 4453	Upper Guide Plate	1
3	AW02 0098	Photosensor	1
4	A232 5436	Exit Relay Harness	1
5	AF02 0418	Exit Roller	1
6	A688 4456	Right Exit Cover	1
7	AA06 6579	Tension Spring	1
8	A688 1350	Connector Cover	1
9	AA02 1031	Magnetic Catch	2
10	AB01 4054	Gear - 20Z	1
11	A688 4485	Junction Gate Solenoid	1
12	A688 4481	Upper Exit Cover	1
13	A688 4482	Roller Holder	2
14	AF04 0558	Driven Roller	2
15	A688 4490	Junction Gate Ass'y	1
16	A688 1300	Rear Cover	1
17	AB01 4174	Gear - 21Z	1
18	AB01 4055	Gear - 24Z	1
19	AA04 3448	Timing Belt - S2M 216	1
20	AB01 7459	Gear/pulley - 16Z/26T	1
21	AA06 6578	Tension Spring	1
22	A688 4471	Gear Bracket	1
23	AA16 1082	Cushion:mirror	1
24	A698 4473	Disk : Torque Limiter	1
25	AA06 3332	Pressure Spring	1
26	A688 4474	Spacer : T=2	1
27	0805 0097	Ring Separator	1
29	A284 5510	Grounding Wire	1

Index No.	Part No.	Description	Q'ty Per Assembly
101	1105 0283	Clamp	
102	0451 3006B	Tapping Screw - M3x6	
103	0720 0040E	Retaining Ring - M4	
104	0805 3480	Bushing - 6mm	
105	1105 0328	Harness Clamp - ES-0505	
106	0451 3006H	Tapping Screw - 3x6	
107	0450 3008B	Tapping Screw - M3x8	
108	0951 3004B	Philips Pan Head Screw - M3x4	
109	0805 0089	Retaining Ring - M4	

2.BRIDGE UNIT 2 (A688)

Rev. 01/14/2000



2.BRIDGE UNIT 2 (A688)

Rev. 12/23/99

Index No.	Part No.	Description	Q'ty Per Assembly
1	A688 3918	Right Base Sheet	1
2	A688 3919	Left Base Sheet	1
3	A688 3913	Support Plate	1
4	AF04 0558	Driven Roller	4
5	A688 3960	Roller Holder	6
6	A688 3964	Right Joint Cover	1
7	A688 3980	Middle Cover	1
8	AA02 1030	Magnet Catch	2
9	AW50 0022	Push Switch	1
10	AF02 0417	Right Transport Roller	1
11	AF02 0416	Transport Roller	2
12	A688 3988	Left Joint Cover	1
13	A688 3995	Support Tray	1
14	AA12 0089	Antistatic Brush	1
15	AA14 3219	Stepped Screw	3
16	A688 3915	Guide Sheet	1
17	AB03 0569	Pulley - 30T	2
18	AA04 3449	Timing Belt - S2M 316	2
19	AB03 0570	Pulley - 30T	1
20	AW02 0098	Photosensor	1
21	A232 5429	Relay Harness	1
22	AX64 0085	Fan Motor - DC 1.68W	1
23	A688 3912	Motor Bracket	1
24	A688 3916	Rear Mylar Guide	1
25	A688 3917	Front Mylar Guide	1
26	G012 3897	Sheet - 13x30	2
27	AF04 0562	Driven Roller	2
29	A284 5510	Grounding Wire	1
30	A688 3914	Spring Plate	1

Index No.	Part No.	Description	Q'ty Per Assembly
101	0450 3008B	Tapping Screw - M3x8	1
102	0450 3008Z	Tapping Screw - M3x8	1
103	0720 0040E	Retaining Ring - M4	1
104	0805 3480	Bushing - 6mm	1
105	0313 0220B	Philips Pan Head Screw - M3x22	1

**BRIDGE UNIT TYPE 450 A688
PARTS INDEX**

This section instructs you as to the numbers and names of parts on this machine.

Part No.	Description	Page and Index No.
A688 1300	Rear Cover	3- 16
A688 1350	Connector Cover	3- 8
A688 3912	Motor Bracket	5- 23
A688 3913	Support Plate	5- 3
A688 3915	Guide Sheet	5- 16
A688 3916	Rear Mylar Guide	5- 24
A688 3917	Front Mylar Guide	5- 25
A688 3918	Right Base Sheet	5- 1
A688 3919	Left Base Sheet	5- 2
A688 3960	Roller Holder	5- 5
A688 3964	Right Joint Cover	5- 6
A688 3980	Middle Cover	5- 7
A688 3988	Left Joint Cover	5- 12
A688 3995	Support Tray	5- 13
A688 4453	Upper Guide Plate	3- 2
A688 4456	Right Exit Cover	3- 6
A688 4471	Gear Bracket	3- 22
A688 4478	Lower Guide Plate	3- 1
A688 4481	Upper Exit Cover	3- 12
A688 4482	Roller Holder	3- 13
A688 4485	Junction Gate Solenoid	3- 11
A688 4490	Junction Gate Ass'y	3- 15

Part No.	Description	Page and Index No.
AA02 1030	Magnet Catch	5- 8
AA02 1031	Magnetic Catch	3- 9
AA04 3448	Timing Belt - S2M 216	3- 19
AA04 3449	Timing Belt - S2M 316	5- 18
AA06 6578	Tension Spring	3- 21
AA06 6579	Tension Spring	3- 7
AA12 0089	Antistatic Brush	5- 14
AA14 3219	Stepped Screw	5- 15
AA16 1082	Cushion:mirror	3- 23
AB01 4054	Gear - 20Z	3- 10
AB01 4055	Gear - 24Z	3- 18
AB01 4056	Gear - 21Z	3- 17
AB01 7459	Gear/pulley - 16Z/26T	3- 20
AB03 0569	Pulley - 30T	5- 17
AB03 0570	Pulley - 30T	5- 19
AF02 0416	Transport Roller	5- 11
AF02 0417	Right Transport Roller	5- 10
AF02 0418	Exit Roller	3- 5
AF04 0558	Driven Roller	5- 4
AF04 0558	Driven Roller	3- 14
AF04 0562	Driven Roller	5- 27
AW02 0098	Photosensor	5- 20
AW02 0098	Photosensor	3- 3
AW50 0022	Push Switch	5- 9
AX64 0085	Fan Motor - DC 1.68W	5- 22
G012 3897	Sheet - 13x30	5- 26

Part No.	Description	Page and Index No.
A232 5429	Relay Harness	5- 21
A232 5436	Exit Relay Harness	3- 4

Part No.	Description	Page and Index No
0313 0220B	Philips Pan Head Screw - M3x22	5-105
0450 3008B	Tapping Screw - M3x8	5-101
0450 3008B	Tapping Screw - M3x8	3-107
0450 3008Z	Tapping Screw - M3x8	5-102
0451 3006B	Tapping Screw - M3x6	3-102
0451 3006H	Tapping Screw - 3x6	3-106
0720 0040E	Retaining Ring - M4	3-103
0720 0040E	Retaining Ring - M4	5-103
0805 0089	Retaining Ring - M4	3-109
0805 3480	Bushing - 6mm	3-104
0805 3480	Bushing - 6mm	5-104
0951 3004B	Philips Pan Head Screw - M3x4	3-108
1105 0283	Clamp	3-101
1105 0328	Harness Clamp - ES-0505	3-105

TECHNICAL SERVICE BULLETINS

BULLETIN NUMBER: A688 - 001

01/14/2000

APPLICABLE MODEL:

GESTETNER – BRIDGE UNIT TYPE 450 for 3235s/3235/3245

RICOH – BRIDGE UNIT TYPE 450 for AFICIO 340/350/450

SAVIN – BRIDGE UNIT TYPE 450 for 9935D/9935DP/9945DP

SUBJECT: BASE: BRIDGE UNIT

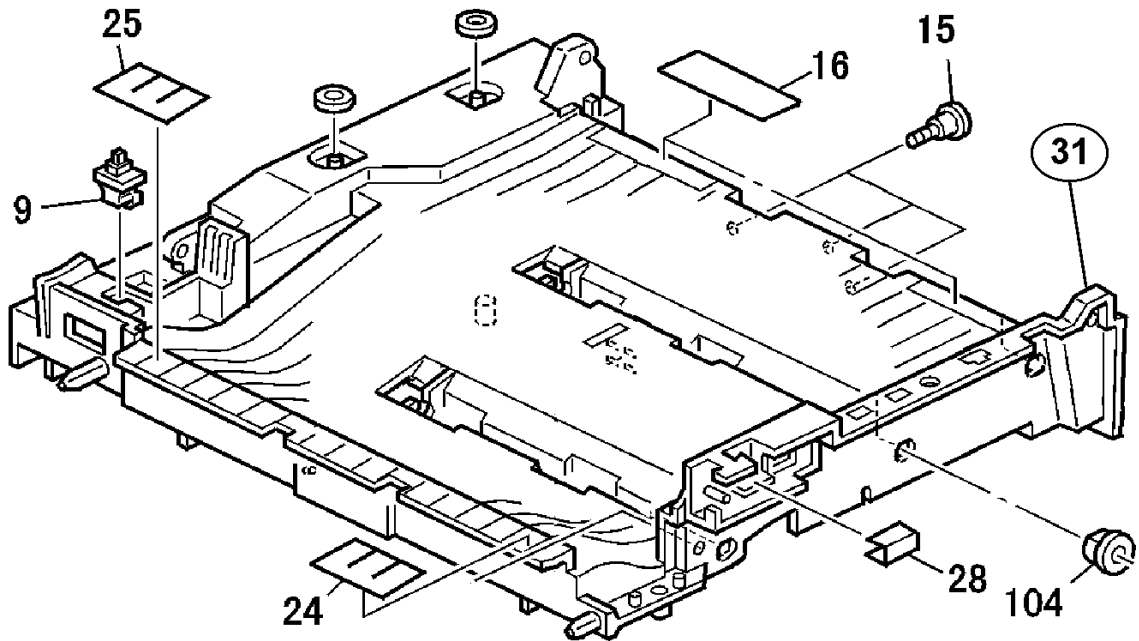
GENERAL:

The Base: Bridge Unit has been registered as a service part. The following part update is being issued for all A230/A231/A232 Parts Catalogs. Please update your Parts Catalogs with the following information.

Note: This copy is intended as a master original for reproduction of additional bulletins.



■ PARTS



PART NUMBER	DESCRIPTION	QTY	REFERENCE	
			PAGE	ITEM
A6883910	Base: Bridge Unit	1	5	31 *

* Denotes new item number.

BULLETIN NUMBER: A688 - 002

09/28/2001

APPLICABLE MODEL:

GESTETNER - BRIDGE UNIT TYPE 450 for 3235S/3235/3245

RICOH - BRIDGE UNIT TYPE 450 for AFICIO 340/350/450

SAVIN - BRIDGE UNIT TYPE 450 for 9935D/9935DP/9945DP

SUBJECT: GEAR 21Z TO TORQUE LIMITER

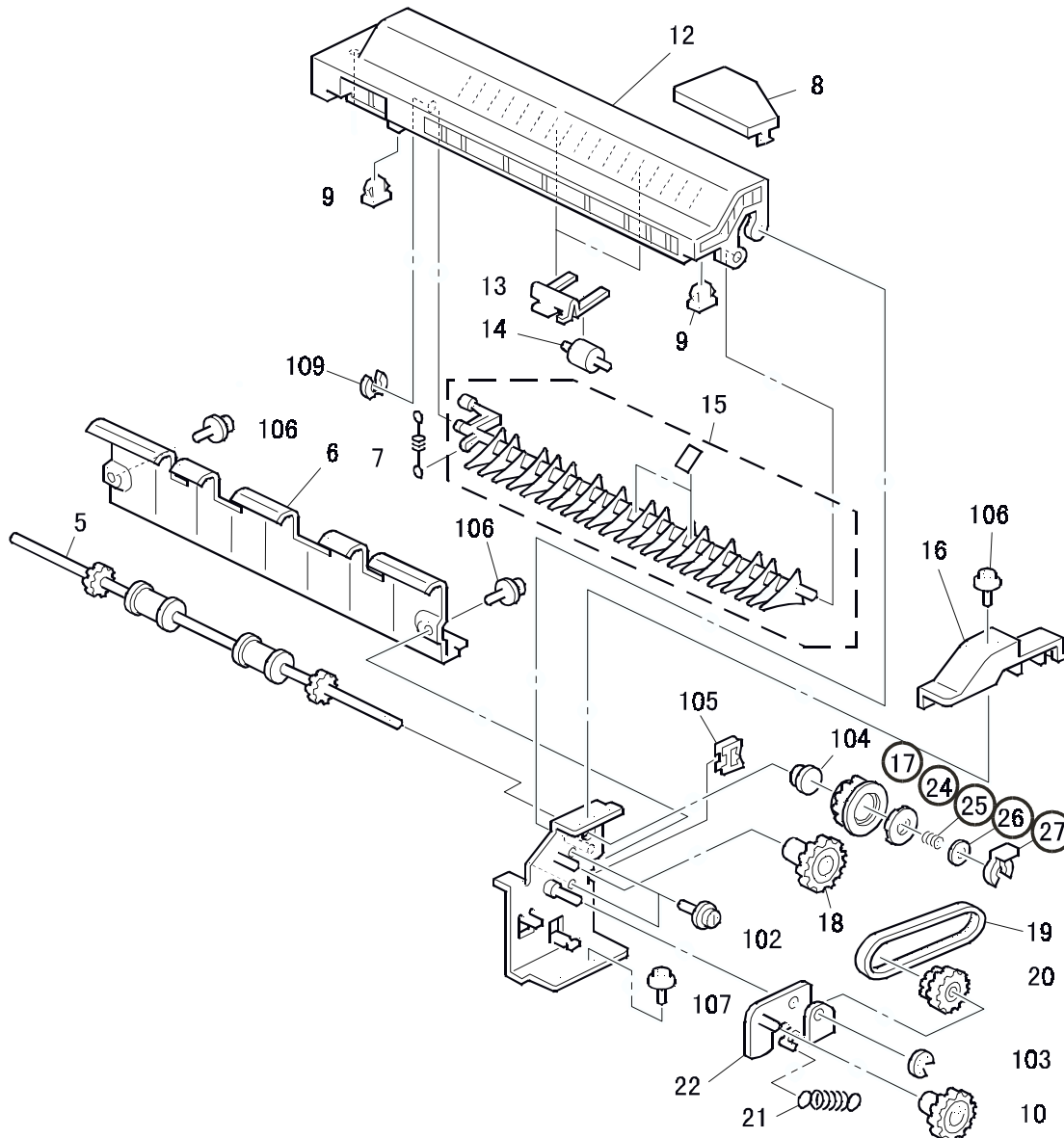
GENERAL:

To prevent damage to the drive gears a torque limiter has been added.
The following additional parts are being issued for all A688 Parts Catalogs Sections.

Note: This copy is intended as a master original for reproduction of additional bulletins.



■ PARTS



Continued...

OLD PART NO.	NEW PART NO.	DESCRIPTION	QTY	INT	REFERENCE	
					PAGE	ITEM
AB014056	AB014174	Gear – 21Z	1-1	3/S	3	17
-	A6884473	Disk : Torque Limiter	0-1	3/S	3	24*
-	AA063332	Pressure Spring	0-1	3/S	3	25*
-	A6884474	Spacer : T=2	0-1	3/S	3	26*
	08050097	Ring Separator	0-1	3/S	3	27*

*DENOTES NEW ITEM NUMBER

UNITS AFFECTED:

All A688 bridge units manufactured after the Serial Numbers listed below will have the new gear and torque limiter installed during production.

MODEL NAME	SERIAL NUMBER
A688 Bridge Unit	A7800860001

INTERCHANGEABILITY CHART:

0	OLD and NEW parts can be used in both OLD and NEW machines.	2	NEW parts CAN NOT be used in OLD machines. OLD parts can be used in OLD and NEW machines.
1	NEW parts can be used in OLD and NEW machines. OLD parts CAN NOT be used in NEW machines.	3	OLD parts CAN NOT be used in NEW machines. NEW parts CAN NOT be used in OLD machines.
3/S	Must be installed as a set on units manufactured prior to the S/N cut-in. On units manufactured after the S/N cut-in or previously modified, use the new part numbers individually.		